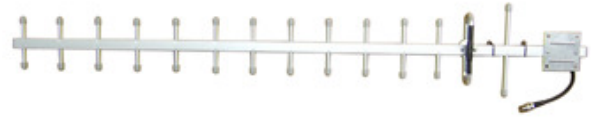
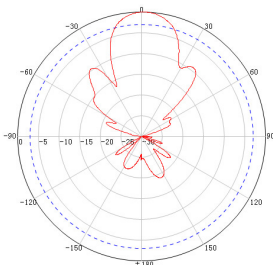


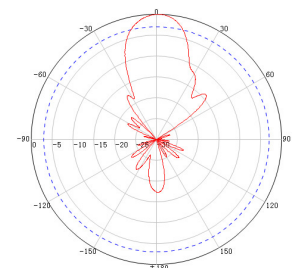
PRODUCT CODE: OY8496-1434
 CEL/ANT YAGI 824-960MHz 14dBi 2G



Electrical Specifications	
Frequency Range	824-960 MHz
Gain	14 dBi
VSWR	≤1.5
Polarization	Horizontal or Vertical
F/B Ratio	≥17 dB
Horizontal Beamwidth	34°
Vertical Beamwidth	28°
Input Impedance	50 Ω
Max.Power	100 W
Lightning Protection	DC Ground
Mechanical Specifications	
Connector	N-Female
Dimensions	1300 mm
Packing Size	1320×200×55 mm
Weight	0.8 kg
Reflector Material	Aluminum
Rated Wind Velocity	210 km/h
Operating Temperature	-40°C to +65 °C
Mounting Pole	Ø38-Ø52 mm



H-Plane



V-Plane